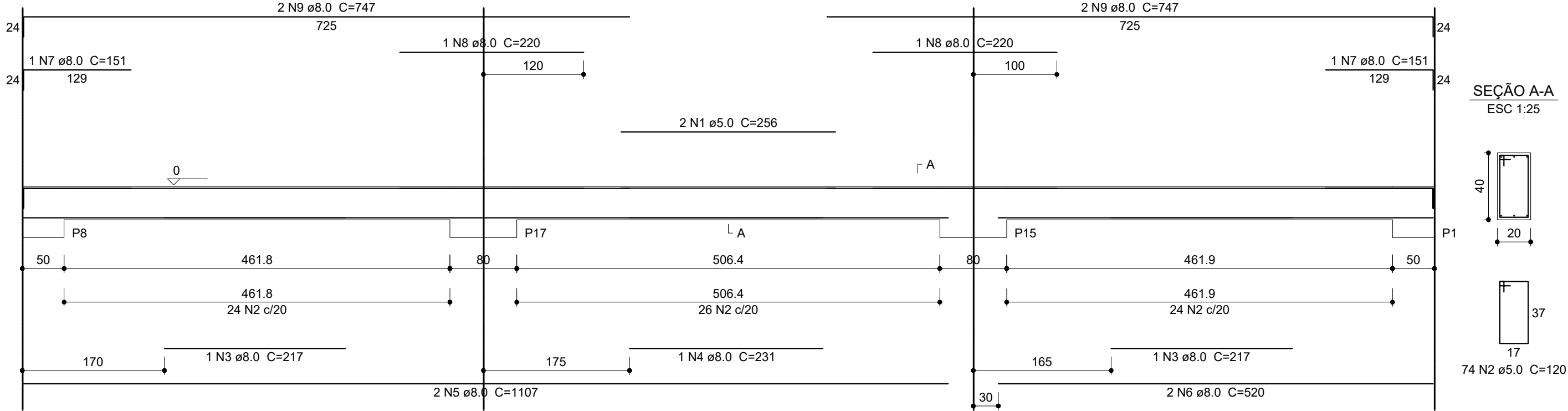


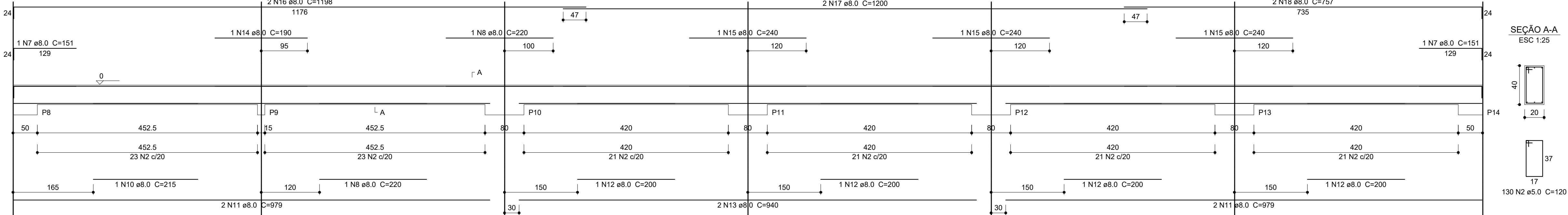
V1

ESC 1:50



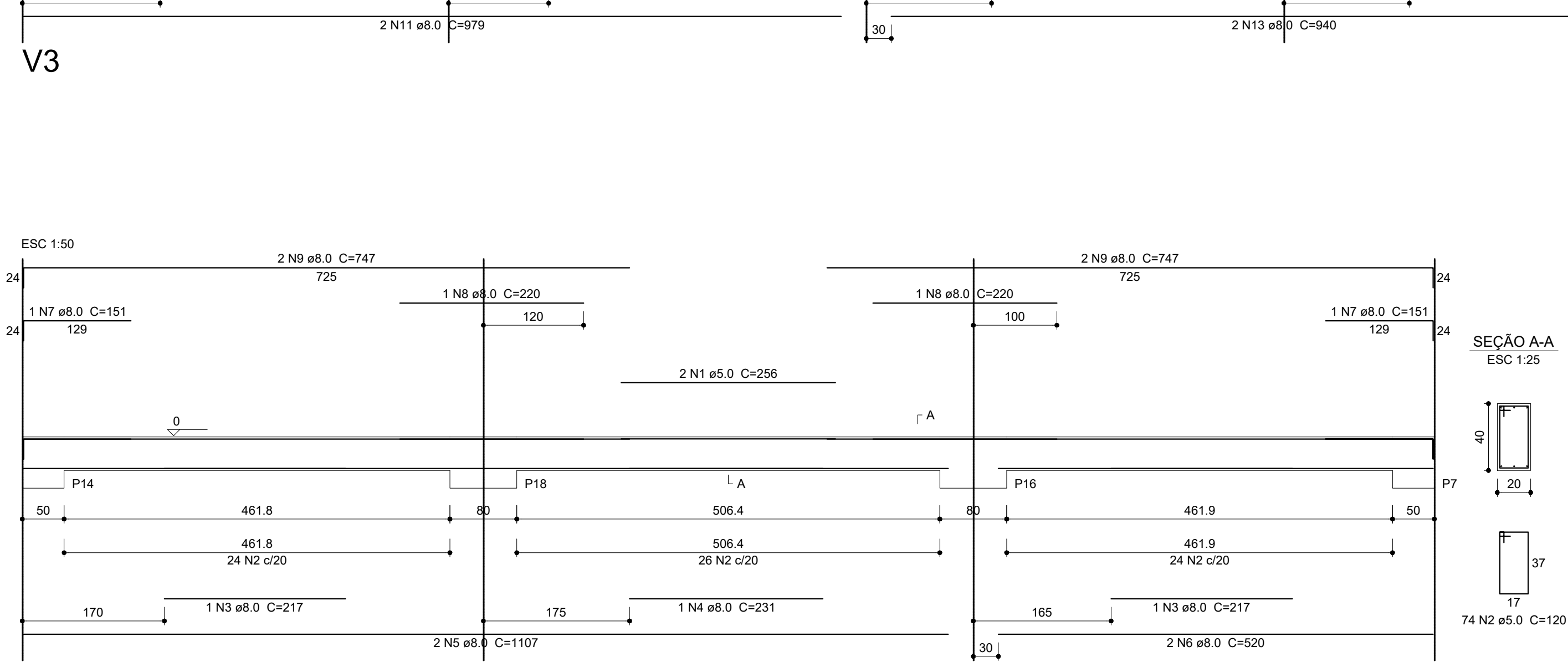
V2

ESC 1:50



V3

ESC 1:50



Resumo do aço

AÇO	DIAM (mm)	C.TOTAL (m)	PESO + 10 % (kg)
CA50	8.0	448.9	194.8
CA60	5.0	495.1	83.9
PESO TOTAL (kg)			
CA50		194.8	
CA60		83.9	

Volume de concreto (C-25) = 7.54 m³
Área de forma = 94.2 m²

V4

ESC 1:50

